

Smart TV / Develop / Tools / Setting Up SDK

Creating Certificates

All applications must be signed with valid certificates before they can be installed or run. This topic describes how to create a certificate profile you can use to sign your applications.

According to the Tizen policy, all applications must be signed with valid certificates before they can be installed or run. The signature verifies the source of the application and makes sure it has not been tampered with since its publication. A certificate profile is a combination of the certificates used for signing, and it can be created using the Certificate Manager. The active certificate profile is used when packaging your application.

Prerequisites

To create or import certificates, you need:

Samsung Certificate Extension

For more information, see [Installing Samsung TV SDK](#).

Samsung Developers Portal account

Device ID (DUID) for the target device on which you want to install your application

Creating a Certificate Profile

A certificate profile consists of an author certificate and 1 or more distributor certificates.

To create a certificate profile:

1. In the Tizen Studio menu, select "Tools > Certificate Manager".

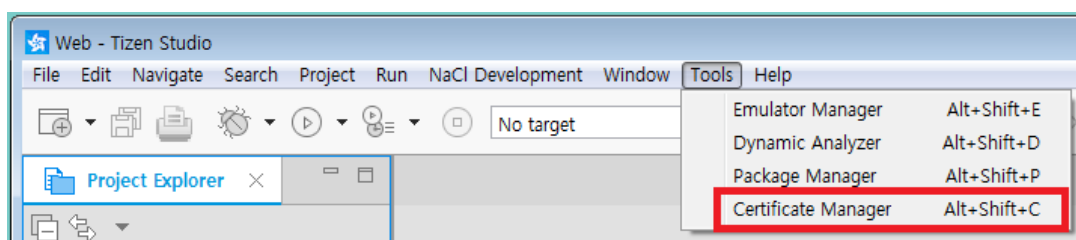


Figure 1. Launch the Certificate Manager

Note

In Tizen Studio 2.0 and lower, if the Tizen Studio and the Certificate Manager are running at the same time, the Certificate Manager can freeze. To avoid this issue, after launching the Certificate Manager, close the Tizen Studio.

2. Click "Cancel" on "Migration for Certificate Profile" dialog.

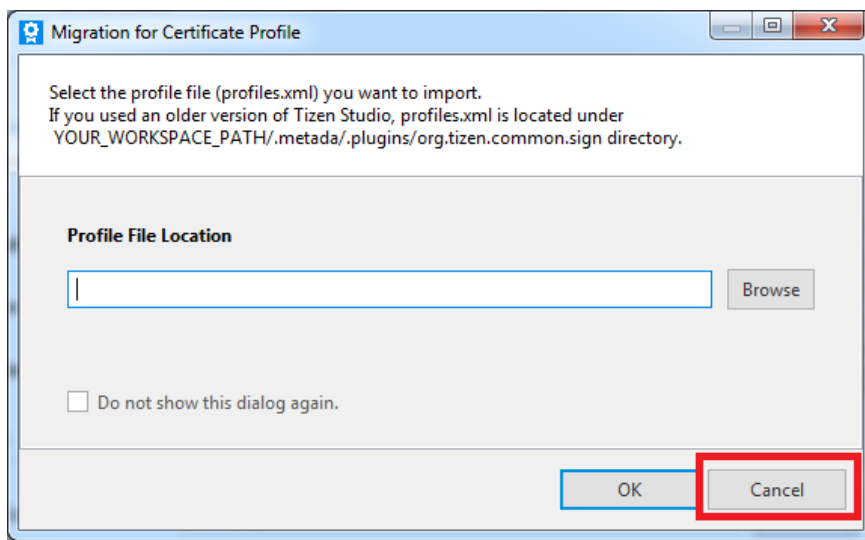


Figure 2. Migration for Certificate Profile

3. Click "+".

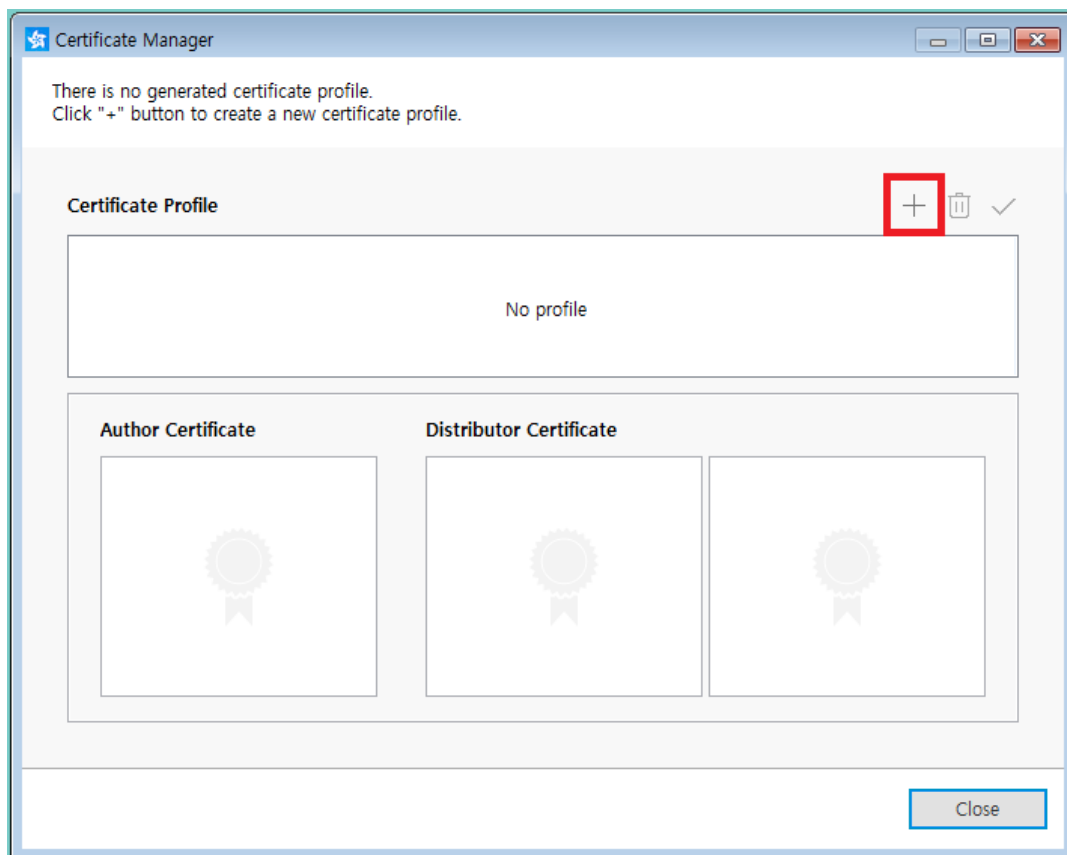


Figure 3. Create a new certificate profile

The certificate profile creation wizard opens.

4. Click "Samsung".

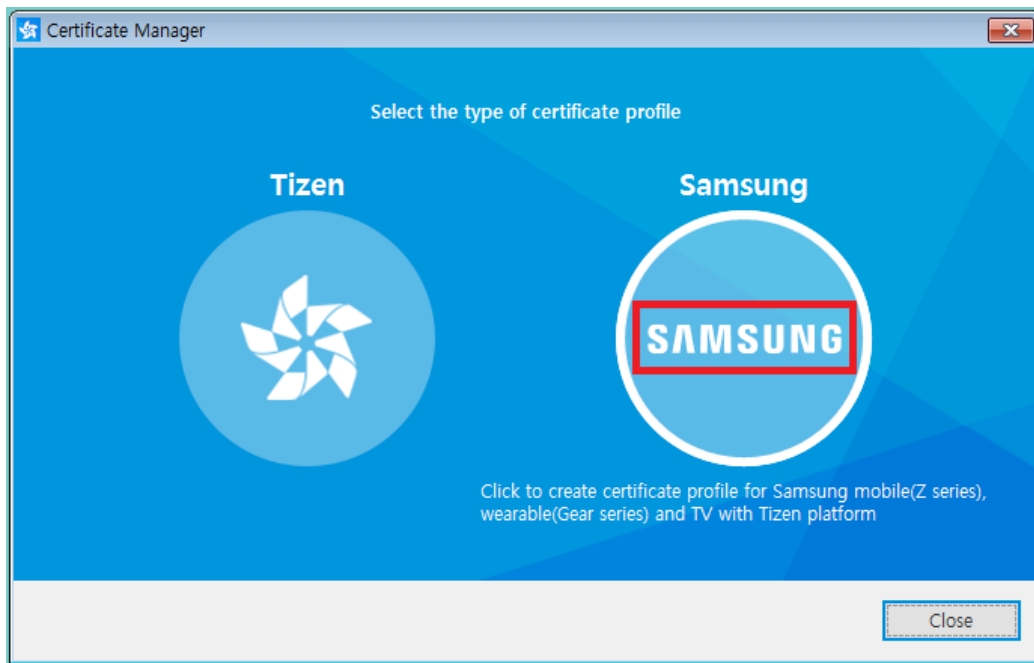


Figure 4. Select certificate profile type

5. Select "TV", and click "Next".

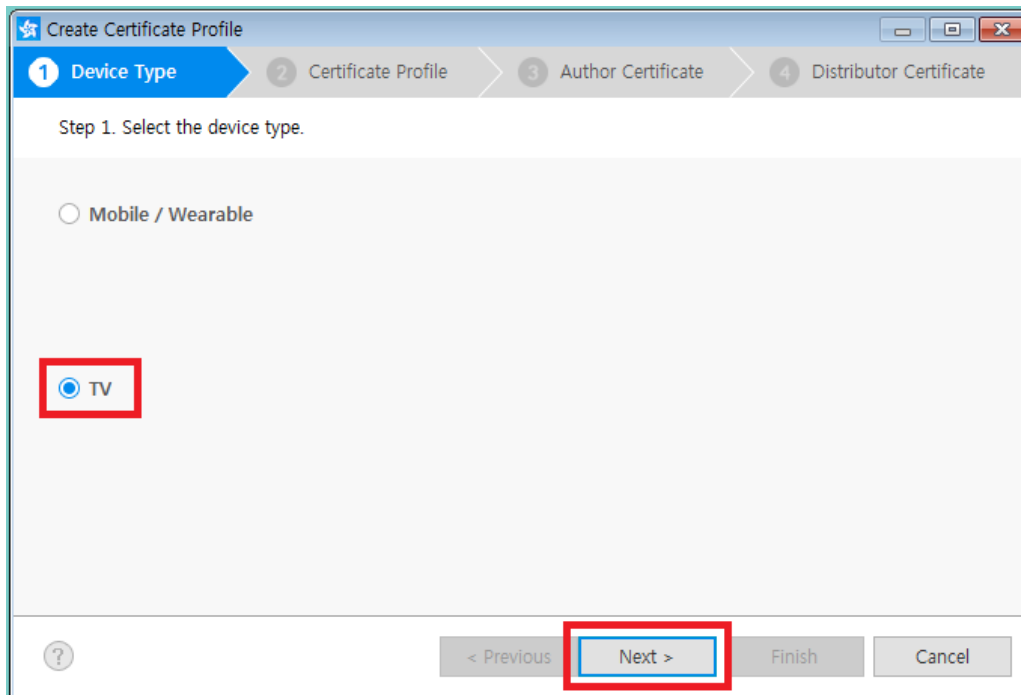


Figure 5. Select device type

6. Enter a name for the certificate profile, and click "Next".

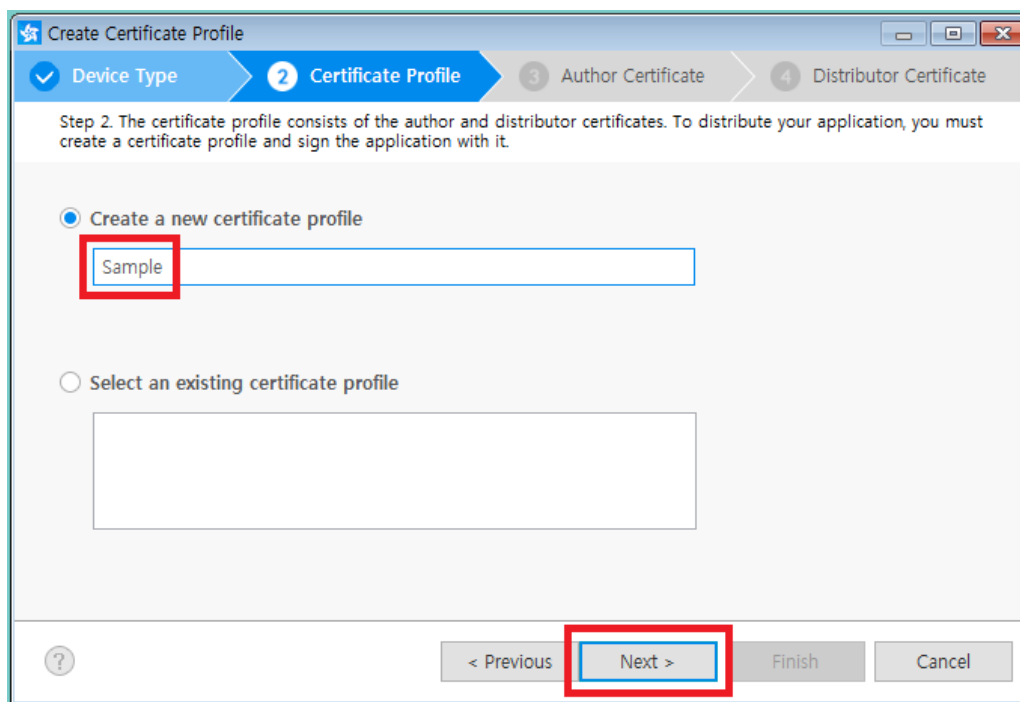


Figure 6. Certificate profile name

7. Add an author certificate.

To create a new author certificate:

You can create a new author certificate or import an existing one.

1. Select "Create a new author certificate" and click "Next".

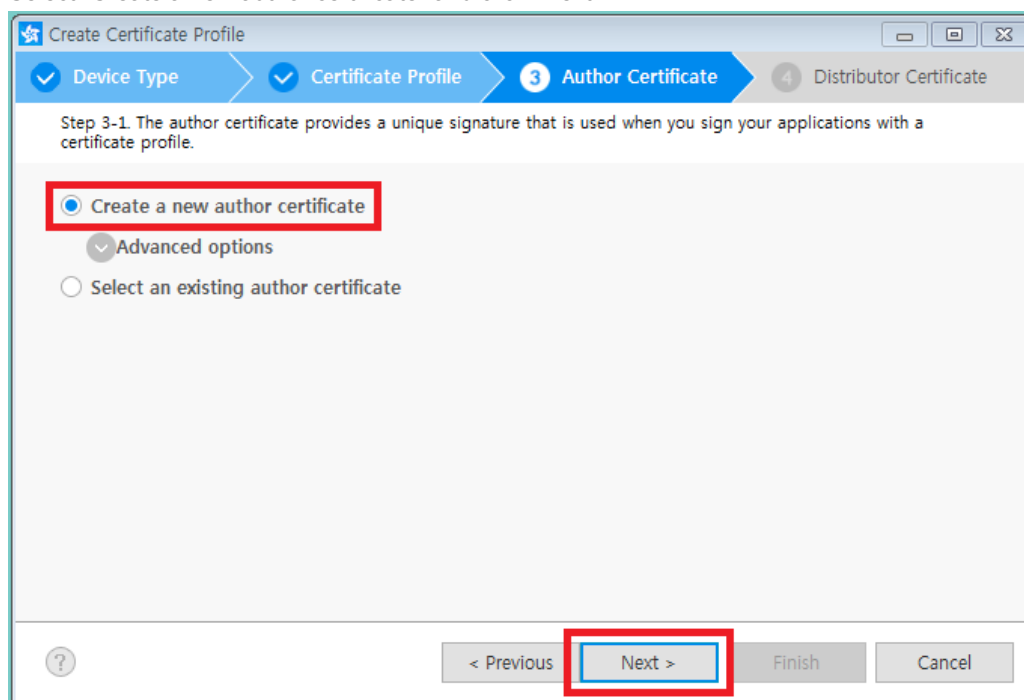


Figure 7. Create new author certificate

2. Enter the required information, and click "Next".

Create Certificate Profile

Step 3-2. Create a new author certificate. The fields marked with * are mandatory.

Author name*

Password*

Confirm password*

☒ Apply the same password for the distributor certificate

Additional Fields

< Previous **Next >** Finish Cancel

Figure 8. Define author information

3. Sign in with your Samsung Developer account.

Samsung account

ID

Password

☐ Remember my ID

☐ Show Password

Sign in

Create new account

[Forgotten your ID or password?](#)

Copyright © Samsung Electronics Co., Ltd. All rights reserved.

Figure 9. Samsung Developer account sign-in

4. Define a backup path for your certificate file, and click "Next".

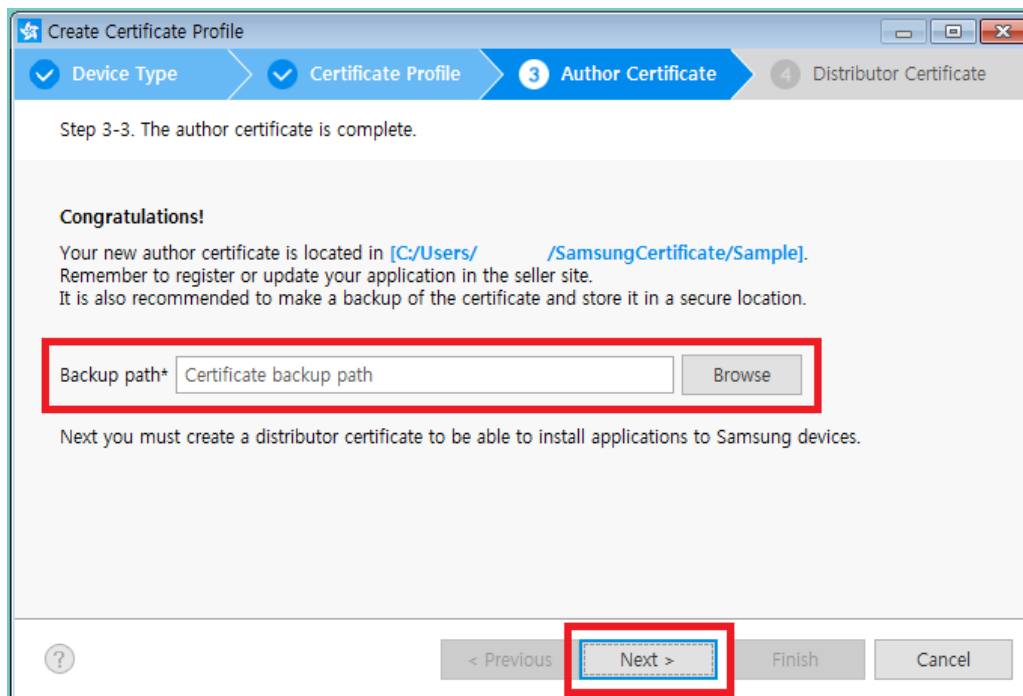


Figure 10. Define backup path

Important

Keep your certificates backed up in a safe location. When you update your published applications, the update must be signed with the same author certificate as the original application. If the applications are signed with different author certificates, the update can be recognized as a different application and not an update.

To import an existing author certificate:

If you already have an author certificate ("author.p12" file), you can import it.

1. Select "Select an existing author certificate", and click "Next".

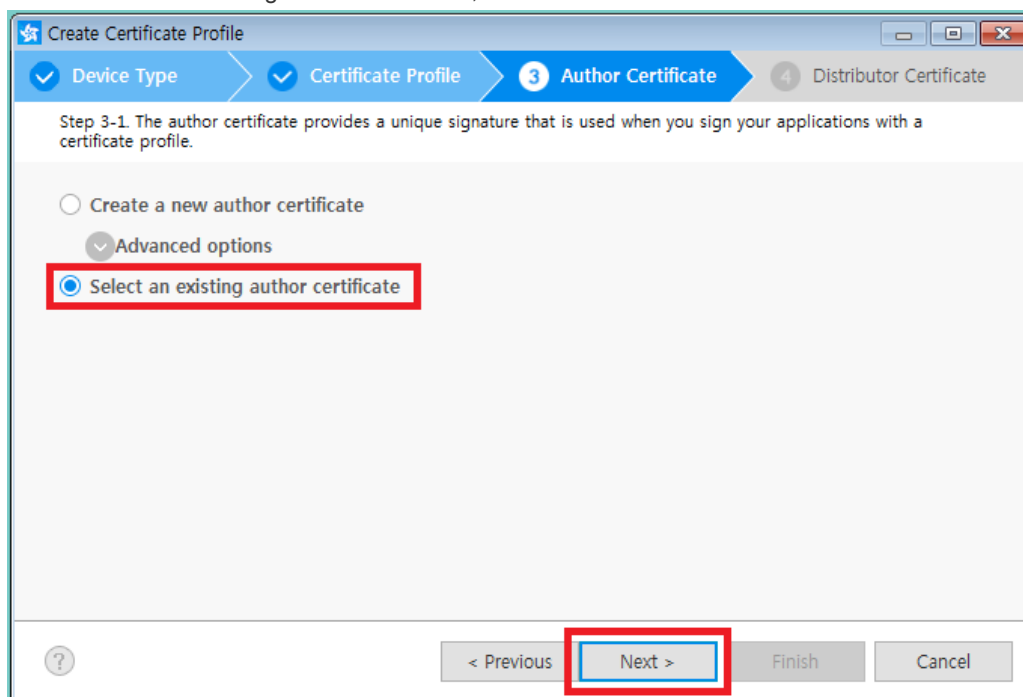


Figure 11. Import existing author certificate

2. Define the existing certificate, and click "Next".

Create Certificate Profile

✓ Device Type > ✓ Certificate Profile > **3 Author Certificate** > 4 Distributor Certificate

Step 3-2. Select an existing author certificate.

Author certificate file location

author.p12 Browse

Password

●●●●●●●●

? < Previous **Next >** Finish Cancel

Figure 12. Define existing author certificate

8. Add a distributor certificate:

8.1 Select "Create a new distributor certificate" and click "Next".

Create Certificate Profile

✓ Device Type > ✓ Certificate Profile > ✓ Author Certificate > **4 Distributor Certificate**

Step 4. Distributor certificate

☒ **Create a new distributor certificate**

☐ Select an existing distributor certificate

Certificate Path Browse

Password Confirm

? < Previous **Next >** Finish Cancel

Figure 13. Create new distributor certificate

8.2 Define the privilege level you need, and add the device ID (DUID) for the target device. You can enter the DUID manually, or by clicking "+" next to the connected device in the list.

Create Certificate Profile

Device Type Certificate Profile Author Certificate **4 Distributor Certificate**

Step 4-1. To install applications to a Samsung device, the device DUID (Device Unique Identifier) must be included in the distributor certificate.

Privilege* Public

Password* ●●●●●●●●

Password Confirm* ●●●●●●●●

☒ Add individual DUIDs*

Enter DUID manually or connect to a device

Enter DUID manually or connect to a device

Enter DUID manually or connect to a device

Enter DUID manually or connect to a device

Enter DUID manually or connect to a device

Enter DUID manually or connect to a device

☐ Import a DUID list file* Browse

< Previous **Next >** Finish Cancel

Figure 14. Define privilege and device ID

Note

To view the device ID, on your device, go to "Menu > Support > Contact Samsung > Unique Device ID".

- To close the certificate profile creation wizard, click "Finish".

Create Certificate Profile

Device Type Certificate Profile Author Certificate **4 Distributor Certificate**

Step 4-2. The distributor certificate is complete.

Congratulations!

Your new distributor certificate is located in [C:/Users/ /SamsungCertificate/Sample]

You can now install applications to Samsung devices.

< Previous Next > **Finish** Cancel

Figure 15. Distributor certificate created

To allow installing your applications on the device, launch the Tizen Studio Device Manager, right-click a folder in the connected device file system, and select "Permit to install applications".

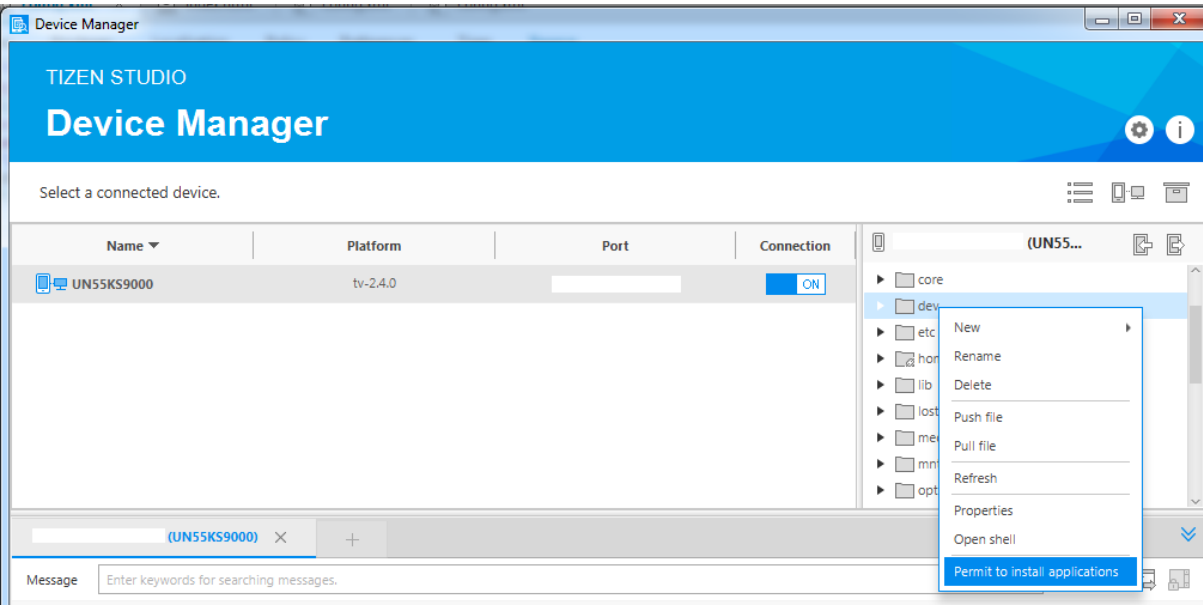


Figure 16. Permit installing applications

Quick Link



Family Site



Legal



Social Communications



System Status Site Map